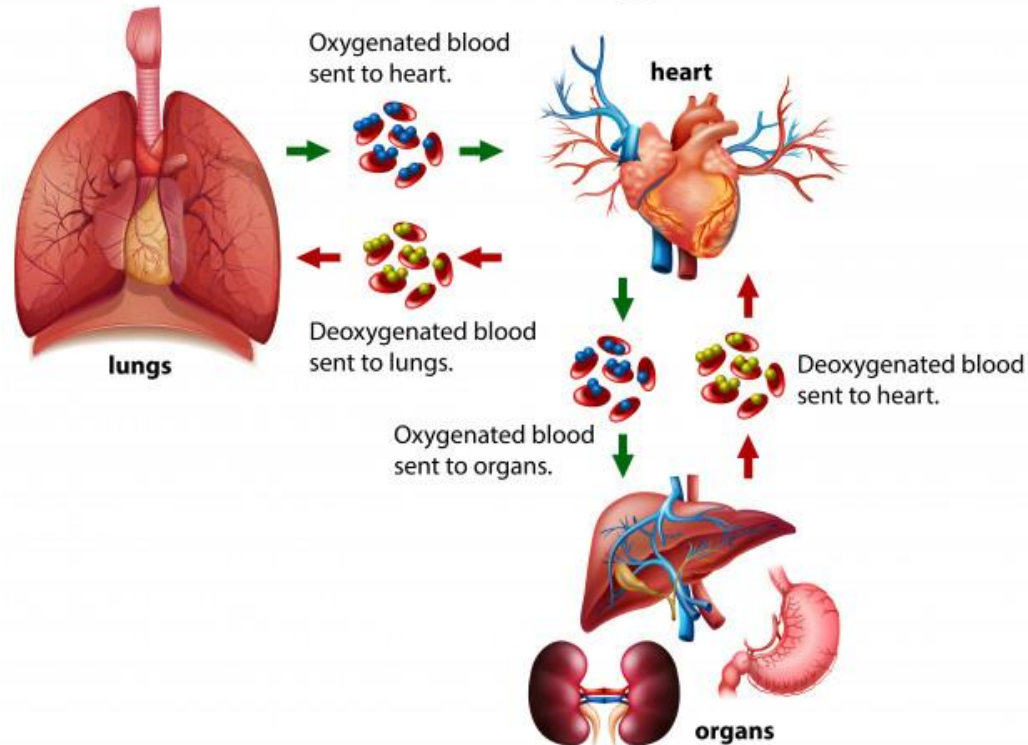


Magnetotherapy affects the growth of oxygen partial pressure

Human Gas Exchange Process



The partial pressure of oxygen is a parameter that has got the impact on how much oxygen from the inhaled air will be assimilated by the body through the exchange of air/blood in the alveoli. Growth of the oxygen partial pressure leads to an increase in the amount of oxygen in the blood. Oxygen absorption mechanism is subjected to self-regulation process, like most of the mechanisms in the human body.